



268
HANDHELD CASES

292
UNIVERSAL
ENCLOSURES

318
HEAVY DUTY
AND ELECTRICAL
ENCLOSURES

342
DESKTOP AND
INSTRUMENT
CASES

348
DEVELOPMENT
BOARD
ENCLOSURES

367
ROOM SENSOR
ENCLOSURES

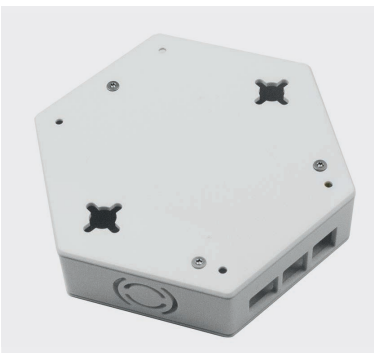
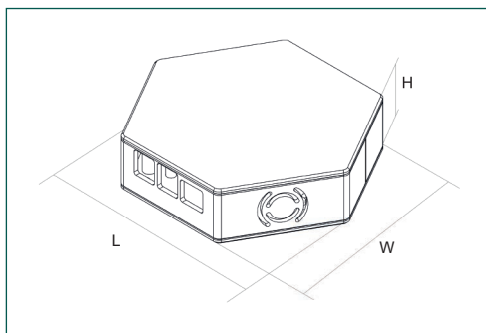
370
CUSTOM SIZED
ENCLOSURES

HEX Raspberry Pi 4B enclosure (Pi4Hex)

Product overview

Hexagon shaped enclosure for the Raspberry Pi 4B. Ideal for smart home IoT devices.

- Pi 4B PCB screws into x4 pillars (screws supplied)
- Fan venting on side of case (fan not included)
- Fan venting designed for 30mm fan
- Cut-outs for ethernet and USB ports only
- Rear cable exit for all other connections
- Rear ventilation
- Keyhole mounting slots on the underside
- Removable cover retained by screws (supplied)
- Supplied with push fit rubber feet



SPECIFICATION	
Material	Black and white: High Impact polystyrene rated for +5°C to +70°C Gloss white: Acrylic capped ABS rated for +5°C to +85°C
UL rating	UL94-HB
Material thickness	3mm

PART NO.	COLOUR	LENGTH	WIDTH	HEIGHT
CBRPI4B-HX-BK	Black	148.61mm	129.9mm	36.5mm
CBRPI4B-HX-WH	White	148.61mm	129.9mm	36.5mm
CBRPI4B-HX-GW	Gloss white	148.61mm	129.9mm	36.5mm

KEY FEATURES

Unique hexagon shape design | Keyhole surface mounting | Venting slots for 30mm fan



PLASTIC ENCLOSURES

